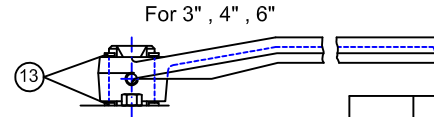
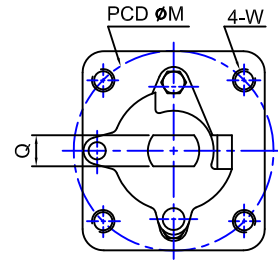
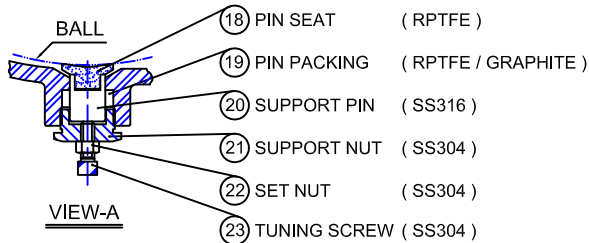
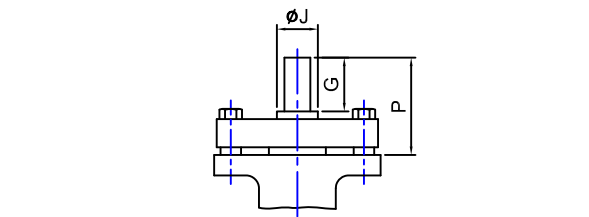


For 3" , 4"

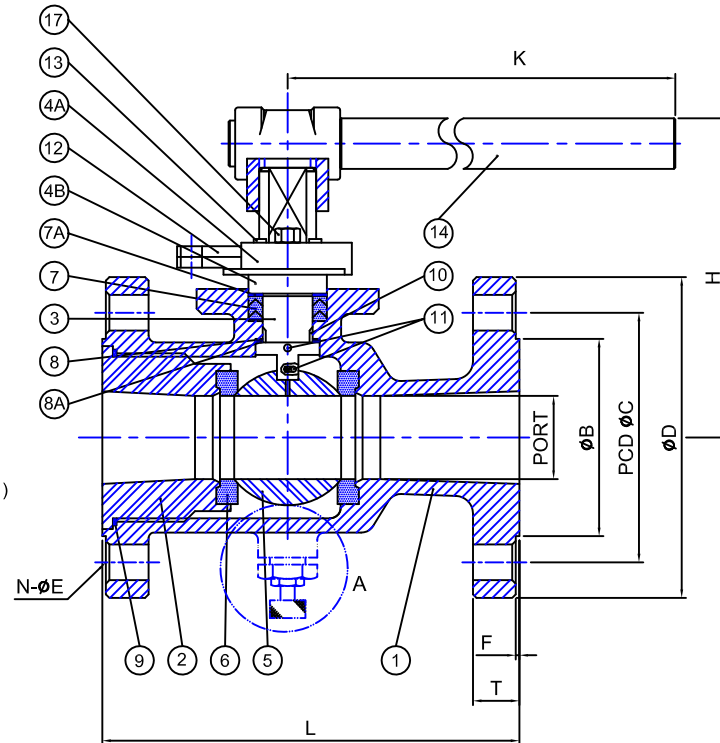


MATERIAL LIST

NO.	PART NAME	MATERIAL		Q'TY
		STAINLESS STEEL	CARBON STEEL	
1	BODY	A351-CF8M	A216-WCB	1
2	CAP	A351-CF8M	A216-WCB	1
3	STEM	SS316		1
4A	GLAND	A351-CF8	A216-WCB	1
4B	SLEEVE	SS304		1
5	BALL	A351-CF8M		1
6	SEAT	RPTFE		2
7	PACKING(1)	RPTFE / GRAPHITE		1
7A	PACKING(2)	50% PTFE + 50% 316		1
8	THRUST WASHER(2)	RPTFE		1
8A	THRUST WASHER(1)	50% PTFE + 50% 316		1
9	GASKET	RPTFE / GRAPHITE		1
10	STEM BEARING	RPTFE		1
11	ANTI-STATIC	SS316		2
12	TRAVEL STOPPER	SS304	STEEL PLATED	1
13	SNAP RING	NICKEL PLATED CARBON STEEL		2~1
14	HANDLE	JUNCTION HEAD (FCD) / PIPE GRIP(S15C)		1
17	GLAND BLOT	SS304	CARBON STEEL	2



SUPPORT BALL DESIGN(12")



3" - 6" : LEVER OPERATION (HANDLE / FCD)

DIMENSIONS

unit:mm

SIZE	PORT	B	C	D	E	F	T	N	H	K	L	J	Q	G	P	M	W	CV	Torque (kgf-cm)	Weight (kgs)
3"	65	127	152.5	190	19	1.6	19.5	4	172	390	203	28	17	33.3	65.8	102	M10X1.5	360	999	17.4
4"	76	157	190.5	229	19	1.6	23.9	8	195	390	229	28	17	44.5	78	102	M10X1.5	690	1200	25.2
6"	100	216	241.5	279	22	1.6	25.4	8	193	390	267	28	17	44.5	78	102	M10X1.5	990	1400	36.6
8"	152	270	298.5	343	22	1.6	28.6	8	303	650	292	43.5	26	42	91	125	M12X1.75	2300	4500	86.7
10"	200	324	362	406	25	1.6	30.2	12	294	950	330	43.5	26	42	91	125	M12X1.75	4000	6500	143
12"	242	381	432	483	25	1.6	31.8	12	347	1100	356	50	35	54	98	140	M16X2.0	7700	9200	235

